



## PBS Electronic Pressure Switch with Display

PBS - electronic pressure switch, transmitter and display in one device.



The pressure switch PBS is designed for pressure monitoring and measurement in liquid and gaseous media. The PBS is suited for general industrial applications such as machine and plant engineering, in machine tool systems, in hydraulic and pneumatic systems, for pressure monitoring and control and for pumps and compressors. It is pressure switch, transmitter and display in one and the same device. In its standard configuration it has two switching outputs (PNP or NPN). In addition, there are configurations available with one or two switching points and an analog output signal (4...20 mA or 0...10 V) as well as with IO-Link.

The PBS features the following functionalities:

- Switching point and reset point (Hysteresis)
- Window function
- Normally open or normally closed
- Switching delay
- Min/max memory
- Password protection to prevent from unintended misadjustment
- Change over between pressure units in display

Customer-specific parametrization at factory is available upon request.

The intuitive setup using the three large buttons and the integrated display are according to the recommendation 24574-1 of the German engineering federation VDMA.

The display and the electrical connector can be rotated against the process connector and against each other to allow well visible display orientation and clean cable routing.

Starting from a smallest measurement range of 0...1 bar, there is a large number of measurement ranges available up to 600 bar. In addition, the PBS offers absolute and compound ranges. The zero point can be adjusted within a span of +3% of the measurement range.

The PBS has a circularly welded stainless steel membrane. Hence, there are no internal sealing elements and it is well suited for a large variety even of corrosive media. The PBS is wear-free and does not require maintenance. As there is a large multitude of customary process connectors available as standard, no additional adapters are needed. For electrical connection the PBS has an M12x1 connector.

### Benefits

- Compact and robust design
- Rotatable housing for flexible installation
- Safe and simple operation and set-up with three large buttons and clearly legible display
- Wide application range
- Insensitive against corrosive media through hermetically sealed stainless steel membrane
- Cost reduction through IO-Link

**SICK**  
Sensor Intelligence.

Technical Data

| Configurations | Unit            | Pressure ranges     | Overpressure safety | Burst pressure  | Pressure ranges     | Overpressure safety | Burst pressure |
|----------------|-----------------|---------------------|---------------------|-----------------|---------------------|---------------------|----------------|
|                | bar             | 0...1               | 2                   | 5               | 0...40              | 80                  | 400            |
|                | bar             | 0...1.6             | 3.2                 | 10              | 0...60              | 120                 | 550            |
|                | bar             | 0...2.5             | 5                   | 10              | 0...100             | 200                 | 800            |
|                | bar             | 0...4               | 8                   | 17              | 0...160             | 320                 | 1000           |
|                | bar             | 0...6               | 12                  | 34              | 0...250             | 500                 | 1200           |
|                | bar             | 0...10              | 20                  | 34              | 0...400             | 800                 | 1700           |
|                | bar             | 0...16              | 32                  | 100             | 0...600             | 1200                | 2400           |
|                | bar             | 0...25              | 50                  | 100             |                     |                     |                |
| Unit           | Pressure ranges | Overpressure safety | Burst pressure      | Pressure ranges | Overpressure safety | Burst pressure      |                |
| bar abs        | 0...1           | 2                   | 5                   | 0...6           | 12                  | 34                  |                |
| bar abs        | 0...1.6         | 3.2                 | 10                  | 0...10          | 20                  | 34                  |                |
| bar abs        | 0...2.5         | 5                   | 10                  | 0...16          | 32                  | 100                 |                |
| bar abs        | 0...4           | 8                   | 17                  | 0...25          | 50                  | 100                 |                |
| Unit           | Pressure ranges | Overpressure safety | Burst pressure      | Pressure ranges | Overpressure safety | Burst pressure      |                |
| bar            | -1...0          | 2                   | 5                   | -1...+9         | 20                  | 34                  |                |
| bar            | -1...+1.5       | 3.2                 | 10                  | -1...+15        | 32                  | 100                 |                |
| bar            | -1...+3         | 8                   | 17                  | -1...+24        | 50                  | 100                 |                |
| bar            | -1...+5         | 8                   | 17                  |                 |                     |                     |                |
| Unit           | Pressure ranges | Overpressure safety | Burst pressure      | Pressure ranges | Overpressure safety | Burst pressure      |                |
| MPa            | 0...0.1         | 0.2                 | 0.5                 | 0...4           | 8                   | 40                  |                |
| MPa            | 0...0.16        | 0.32                | 1                   | 0...6           | 12                  | 55                  |                |
| MPa            | 0...0.25        | 0.5                 | 1                   | 0...10          | 20                  | 80                  |                |
| MPa            | 0...0.4         | 0.8                 | 1.7                 | 0...16          | 32                  | 100                 |                |
| MPa            | 0...0.6         | 1.2                 | 3.4                 | 0...25          | 50                  | 120                 |                |
| MPa            | 0...1           | 2                   | 3.4                 | 0...40          | 80                  | 170                 |                |
| MPa            | 0...1.6         | 3.2                 | 10                  | 0...60          | 120                 | 240                 |                |
| MPa            | 0...2.5         | 5                   | 10                  |                 |                     |                     |                |
| Unit           | Pressure ranges | Overpressure safety | Burst pressure      | Pressure ranges | Overpressure safety | Burst pressure      |                |
| MPa abs        | 0...0.1         | 0.2                 | 0.5                 | 0...0.6         | 1.2                 | 3.4                 |                |
| MPa abs        | 0...0.16        | 0.32                | 1                   | 0...1           | 2                   | 3.4                 |                |
| MPa abs        | 0...0.25        | 0.5                 | 1                   | 0...1.6         | 3.2                 | 10                  |                |
| MPa abs        | 0...0.4         | 0.8                 | 1.7                 | 0...2.5         | 3.2                 | 10                  |                |
| Unit           | Pressure ranges | Overpressure safety | Burst pressure      | Pressure ranges | Overpressure safety | Burst pressure      |                |
| MPa            | -0.1...0        | 2                   | 5                   | -0.1...+0.9     | 2                   | 3.4                 |                |
| MPa            | -0.1...+0.15    | 3.2                 | 10                  | -0.1...+1.5     | 3.2                 | 10                  |                |
| MPa            | -0.1...+0.3     | 8                   | 17                  | -0.1...+2.4     | 3.2                 | 10                  |                |
| MPa            | -0.1...+0.5     | 8                   | 17                  |                 |                     |                     |                |

Errors excepted, subject to modifications

Technical Data

| Configurations         | Unit            | Pressure ranges     | Overpressure safety | Burst pressure  | Pressure ranges     | Overpressure safety | Burst pressure |
|------------------------|-----------------|---------------------|---------------------|-----------------|---------------------|---------------------|----------------|
|                        | psi             | 0...15              | 30                  | 75              | 0...500             | 1000                | 2500           |
|                        | psi             | 0...25              | 60                  | 150             | 0...1000            | 1740                | 7975           |
|                        | psi             | 0...30              | 60                  | 150             | 0...1500            | 2900                | 11600          |
|                        | psi             | 0...50              | 100                 | 250             | 0...2000            | 4000                | 14500          |
|                        | psi             | 0...100             | 200                 | 500             | 0...3000            | 6000                | 17400          |
|                        | psi             | 0...160             | 290                 | 500             | 0...5000            | 10000               | 24650          |
|                        | psi             | 0...200             | 400                 | 600             | 0...8000            | 17400               | 34800          |
|                        | psi             | 0...300             | 600                 | 1500            |                     |                     |                |
| Unit                   | Pressure ranges | Overpressure safety | Burst pressure      | Pressure ranges | Overpressure safety | Burst pressure      |                |
| psi abs                | 0...15          | 30                  | 75                  | 0...100         | 200                 | 500                 |                |
| psi abs                | 0...25          | 60                  | 150                 | 0...160         | 290                 | 500                 |                |
| psi abs                | 0...30          | 60                  | 150                 | 0...200         | 400                 | 600                 |                |
| psi abs                | 0...50          | 100                 | 250                 | 0...300         | 600                 | 1500                |                |
| Unit                   | Pressure ranges | Overpressure safety | Burst pressure      | Pressure ranges | Overpressure safety | Burst pressure      |                |
| psi                    | -30 InHg...0    | 30                  | 75                  | -30 InHg...+100 | 200                 | 500                 |                |
| psi                    | -30 InHg...+15  | 30                  | 75                  | -30 InHg...+160 | 290                 | 500                 |                |
| psi                    | -30 InHg...+25  | 60                  | 150                 | -30 InHg...+200 | 400                 | 1500                |                |
| psi                    | -30 InHg...+30  | 60                  | 150                 | -30 InHg...+300 | 600                 | 1500                |                |
| psi                    | -30 InHg...+50  | 100                 | 250                 |                 |                     |                     |                |
| Unit                   | Pressure ranges | Overpressure safety | Burst pressure      | Pressure ranges | Overpressure safety | Burst pressure      |                |
| kg/cm <sup>2</sup>     | 0...1           | 2                   | 5                   | 0...40          | 80                  | 400                 |                |
| kg/cm <sup>2</sup>     | 0...1.6         | 3.2                 | 10                  | 0...60          | 120                 | 550                 |                |
| kg/cm <sup>2</sup>     | 0...2.5         | 5                   | 10                  | 0...100         | 200                 | 800                 |                |
| kg/cm <sup>2</sup>     | 0...4           | 8                   | 17                  | 0...160         | 320                 | 1000                |                |
| kg/cm <sup>2</sup>     | 0...6           | 12                  | 34                  | 0...250         | 500                 | 1200                |                |
| kg/cm <sup>2</sup>     | 0...10          | 20                  | 34                  | 0...400         | 800                 | 1700                |                |
| kg/cm <sup>2</sup>     | 0...16          | 32                  | 100                 | 0...600         | 1200                | 2400                |                |
| kg/cm <sup>2</sup>     | 0...25          | 50                  | 100                 |                 |                     |                     |                |
| Unit                   | Pressure ranges | Overpressure safety | Burst pressure      | Pressure ranges | Overpressure safety | Burst pressure      |                |
| kg/cm <sup>2</sup> abs | 0...1           | 2                   | 5                   | 0...6           | 12                  | 34                  |                |
| kg/cm <sup>2</sup> abs | 0...1.6         | 3.2                 | 10                  | 0...10          | 20                  | 34                  |                |
| kg/cm <sup>2</sup> abs | 0...2.5         | 5                   | 10                  | 0...16          | 32                  | 100                 |                |
| kg/cm <sup>2</sup> abs | 0...4           | 8                   | 17                  | 0...25          | 50                  | 100                 |                |
| Unit                   | Pressure ranges | Overpressure safety | Burst pressure      | Pressure ranges | Overpressure safety | Burst pressure      |                |
| kg/cm <sup>2</sup>     | -1...0          | 2                   | 5                   | -1...+9         | 20                  | 34                  |                |
| kg/cm <sup>2</sup>     | -1...+1.5       | 3.2                 | 10                  | -1...+15        | 32                  | 100                 |                |
| kg/cm <sup>2</sup>     | -1...+3         | 8                   | 17                  | -1...+24        | 50                  | 100                 |                |
| kg/cm <sup>2</sup>     | -1...+5         | 12                  | 17                  |                 |                     |                     |                |

Errors excepted, subject to modifications

## Technical Data

|   |  |
|---|--|
| Fatigue life  | 10 Mio. max. load cycles   |
| Materials   |  |
| ■ Wetted parts  |  |
| Pressure connection                                     | 316 L  |
| Pressure sensor   | 316 L (up to 0 ... 10 bar rel 13-8 PH)   |
| ■ Housing   |  |
| Lower body  | 316 L  |
| Plastic head  | PC + ABS   |
| Buttons   | TPE-E  |
| Display window  | PC   |
| ■ Internal transmission fluid                           | Silicone oil (only with pressure ranges < 0 ... 10 bar and ≤ 0 ... 25 bar abs)   |
| Supply voltage L*                                       | 15 ... 35 V DC   |
| Signal output and maximum ohmic load R <sub>A</sub>     | 4 ... 20 mA, 3-wire R <sub>A</sub> ≤ 0.5 kOhm<br>0 ... 10 V, 3-wire R <sub>A</sub> > 10 kOhm<br>adjustment zero point offset, max +3 % of span       |
| Setting time (analog signal)                            | 3 ms   |
| Current consumption                                     | max. 100 mA  |
| Total current consumption                               | max. 350 mA / 600 mA (incl. switching current)   |
| Switching points  | Individually adjustable via external control buttons   |
| ■ Type  | Transistor switching output PNP or NPN Number: 1 or 2<br>With IO-Link: C/Q <sub>1</sub> : PNP  |
| ■ Function  | normally open / normally closed; windows- and hysteresis function freely adjustable  |
| ■ Contact rating  | Supply voltage L* - 1 V [V DC]   |
| ■ Switching current                                     | 250 mA<br>With IO-Link: C/Q <sub>1</sub> : 100 mA, Q <sub>2</sub> : 250 mA   |
| ■ Response time   | ≤ 10 ms  |
| ■ Switching delay                                       | 0 ... 50 s (adjustable)  |
| ■ Rotatability of housing                               | Display against housing with electrical connection: 330°. Housing against process connection: 320°   |
| ■ Accuracy  | ≤ 0.5 % of span (setting accuracy)   |
| Isolation voltage                                       | 500 V DC   |
| Display   |  |
| ■ Design  | 14-Segment-LED, blue, 4-digits, height 9 mm  |
| ■ Range   | Electronically turnable by 180°  |
| ■ Accuracy  | ≤ 1.0 % of span ± 1 digit  |
| ■ Update  | 1000, 500, 200, 100 ms (adjustable)  |
| Accuracy  | ≤ ± 1.0 % of span*)<br>*) Including non-linearity, hysteresis, zero point and full scale error (corresponds to error of measurement per IEC 61298-2) |
| Non-linearity   | ≤ ± 0.5 % of span (BFSL) according to IEC 61298-2  |
| Long-term drift   | ≤ 0.2 % of span according to IEC 61298-2   |
| Permissible temperature of                              |  |
| ■ Medium  | -20 ... +85 °C   |
| ■ Ambience  | -20 ... +80 °C   |
| ■ Storage   | -20 ... +80 °C   |
| Rated temperature range                                 | 0 ... +80 °C   |
| Temperature error within rated temperature range        | ≤ 1.0 % of span typ., ≤ 2.5 % max.   |
| Temperature coefficients within rated temperature range |  |
| ■ Mean TC of zero                                       | ≤ 0.2% of span / 10 K  |
| ■ Mean TC of span                                       | ≤ 0.2 % of span / 10 K   |
| Relative humidity                                       | 90%  |
| CE-conformity   |  |
| ■ Pressure equipment directive                          | This instrument is a pressure accessory as defined by the directive 97/23/EC   |
| ■ EMC directive   | 2004/108/EEC, EN 61326-2-3   |
| Enclosure rating  | IP 67  |

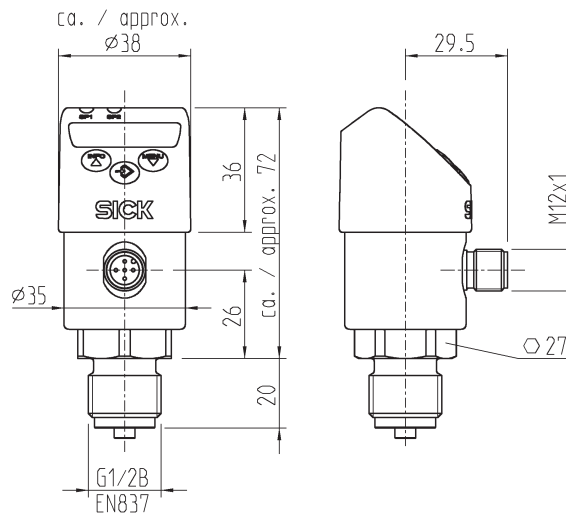
**Technical Data**

|                               |  |                             |
|-------------------------------|--|-----------------------------|
| Shock resistance              | 50 g according to IEC 60068-2-27                           | (mechanical shock)          |
| Vibration resistance          | 10 g according to IEC 60068-2-6                            | (vibration under resonance) |
| Wiring protection             |  |                             |
| ■ Protection class            | III  |                             |
| ■ Overvoltage protection      | 40 V DC  |                             |
| ■ Short-circuit protection    | Q <sub>A</sub> , Q <sub>1</sub> , Q <sub>2</sub> towards M |                             |
| ■ Reverse polarity protection | L <sup>+</sup> towards M                                   |                             |
| Weight                        | Approx. 200 g  |                             |

Dimensions in mm

**Electrical Connection**

Circular connector \*)  
M 12x1



**Pressure Connection**

G 1/2  
EN 837  
Type code: GE

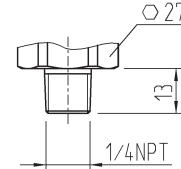
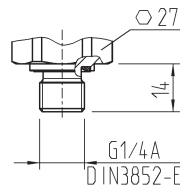
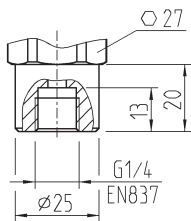
\*) Mating connectors are not included in delivery.

**Pressure Connections**

G 1/4 Female  
EN 837  
Type code: G2

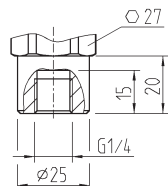
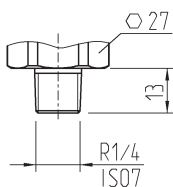
G 1/4  
DIN 3852-E  
Type code: G1

1/4" NPT  
per „Nominal size for US standard tapered, pipe thread NPT“  
Type code: N1



R 1/4 ISO7  
Type code: R1

G 1/4 Female  
Compatible with Ermeto  
Type code: GH

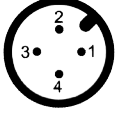
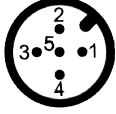


Further pressure connections on request  
For installation and safety instructions see the operating instructions for this product.

**Pressure Port** (0.3 or 0.6 mm) available for G 1/4 according to DIN 3852-E. (0.3 mm for p ≥ 10 bar)

Errors excepted, subject to modifications

Wiring connections

|  |  |
|--|--|
| <p>Circular connector M12x1, 4-pin</p>  <p>2 switching outputs or<br/>1 switching output + 1 analog output</p> <p>L<sup>+</sup> = 1    M = 3    Q<sub>1</sub> = 4    Q<sub>2</sub> = 2<br/>C/Q<sub>1</sub> = 4    Q<sub>A</sub> = 2</p> | <p>Circular connector M12x1, 5-pin</p>  <p>2 switching outputs + 1 analog output</p> <p>L<sup>+</sup> = 1    M = 3    Q<sub>1</sub> = 4    Q<sub>2</sub> = 2    Q<sub>A</sub> = 5<br/>C/Q<sub>1</sub> = 4</p> |
| <p>Ingress Protection per IEC 60 529 IP 67</p>   | <p>IP 67</p>   |
| <p>The ingress protection classes specified only apply while the pressure transmitter is connected with female connectors that provide the corresponding ingress protection.</p>   |  |

Legend:

- L<sup>+</sup> Positive supply connection
- M Negative supply connection
- Q<sub>1</sub> Switching output 1
- C/Q<sub>1</sub> With IO-Link: Communication/ switching output 1
- Q<sub>2</sub> Switching output 1
- Q<sub>A</sub> Analog output

Accessories

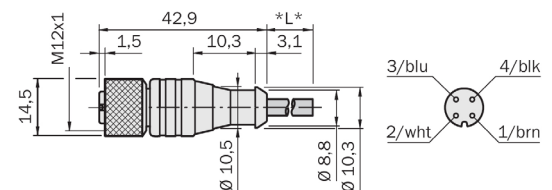
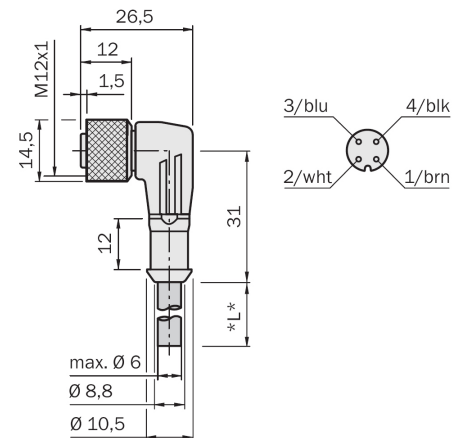
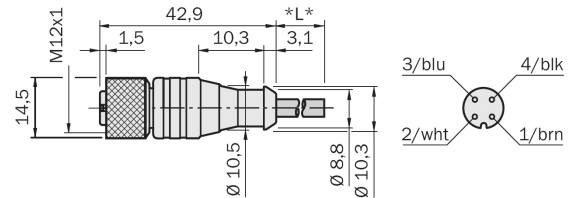
PVC circular plug-in connector, M12, 4-pin



| Part-No. | Model name    | Cable length |
|----------|---------------|--------------|
| 6009382  | DOL-1204-G02M | 2 m          |
| 6009866  | DOL-1204-G05M | 5 m          |
| 6010543  | DOL-1204-G10M | 10 m         |
| 6010753  | DOL-1204-G15M | 15 m         |
| 6034401  | DOL-1204-G20M | 20 m         |

| Part-No. | Model name    | Cable length |
|----------|---------------|--------------|
| 6009383  | DOL-1204-W02M | 2 m          |
| 6009867  | DOL-1204-W05M | 5 m          |
| 6010541  | DOL-1204-W10M | 10 m         |
| 6036474  | DOL-1204-W15M | 15 m         |
| 6033559  | DOL-1204-W20M | 20 m         |

| Part-No. | Model name       | Cable length | Coating colour |
|----------|------------------|--------------|----------------|
| 6033686  | DOL-1204-G01MS02 | 1 m          | grey           |
| 6033687  | DOL-1204-G04MS02 | 4 m          | grey           |
| 6033688  | DOL-1204-G05MS02 | 5 m          | grey           |
| 6033690  | DOL-1204-G07MS02 | 7 m          | grey           |

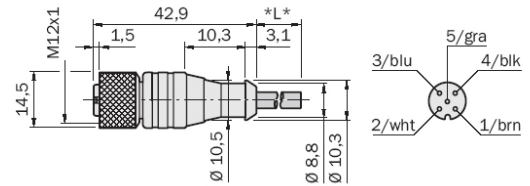


Errors excepted, subject to modifications

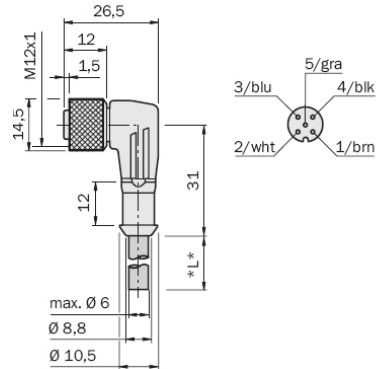
PVC circular plug-in connector, M12, 5-pin



| Part No. | Model name    | Cable length |
|----------|---------------|--------------|
| 6008899  | DOL-1205-G02M | 2 m          |
| 6009868  | DOL-1205-G02M | 5 m          |
| 6010544  | DOL-1205-G02M | 10 m         |
| 6029215  | DOL-1205-G02M | 15 m         |



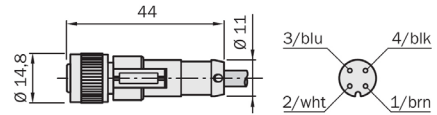
| Part No. | Model name    | Cable length |
|----------|---------------|--------------|
| 6008900  | DOL-1205-W02M | 2 m          |
| 6009868  | DOL-1205-W05M | 5 m          |
| 6010542  | DOL-1205-W10M | 10 m         |



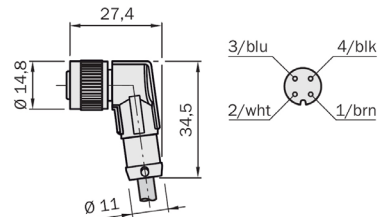
PUR circular plug-in connector, M12, 4-pin



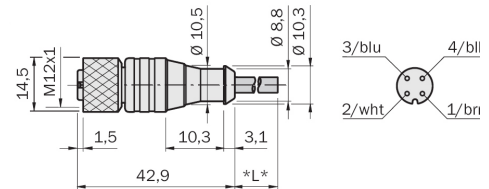
| Part No. | Model name     | Cable length |
|----------|----------------|--------------|
| 6025900  | DOL-1204-G02MC | 2 m          |
| 6025901  | DOL-1204-G05MC | 5 m          |
| 6025902  | DOL-1204-G10MC | 10 m         |
| 6034749  | DOL-1204-G15MC | 15 m         |
| 6034750  | DOL-1204-G20MC | 20 m         |
| 6034751  | DOL-1204-G25MC | 25 m         |



| Part No. | Model name     | Cable length |
|----------|----------------|--------------|
| 6025903  | DOL-1204-W02MC | 2 m          |
| 6025904  | DOL-1204-W05MC | 5 m          |
| 6025905  | DOL-1204-W10MC | 10 m         |
| 6034752  | DOL-1204-W15MC | 15 m         |
| 6034753  | DOL-1204-W20MC | 20 m         |
| 6034754  | DOL-1204-W25MC | 25 m         |



| Part No. | Model name     | Cable length             |
|----------|----------------|--------------------------|
| 6026250  | DOL-1204-G05MD | 5 m, welding spark-proof |

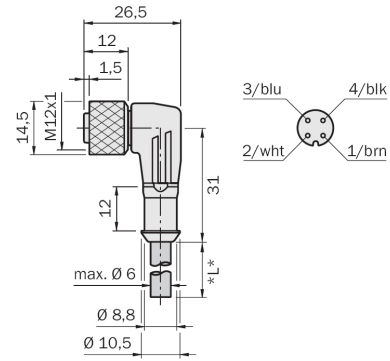


Errors excepted, subject to modifications

PUR circular plug-in connector, M12, 4-pin



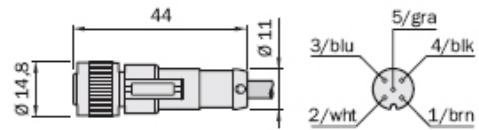
| Part No. | Model name     | Cable length             |
|----------|----------------|--------------------------|
| 6020399  | DOL-1204-W05MD | 5 m, welding spark-proof |



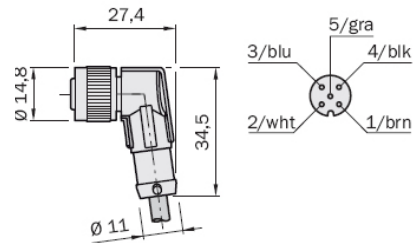
PUR circular plug-in connector, M12, 5-pin



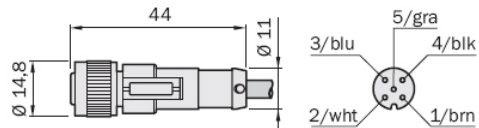
| Part No. | Model name     | Cable length |
|----------|----------------|--------------|
| 6025906  | DOL-1205-G02MC | 2 m          |
| 6025907  | DOL-1205-G05MC | 5 m          |
| 6025908  | DOL-1205-G10MC | 10 m         |



| Part No. | Model name     | Cable length |
|----------|----------------|--------------|
| 6025909  | DOL-1205-G02MC | 2 m          |
| 6025910  | DOL-1205-G05MC | 5 m          |
| 6025911  | DOL-1205-G10MC | 10 m         |

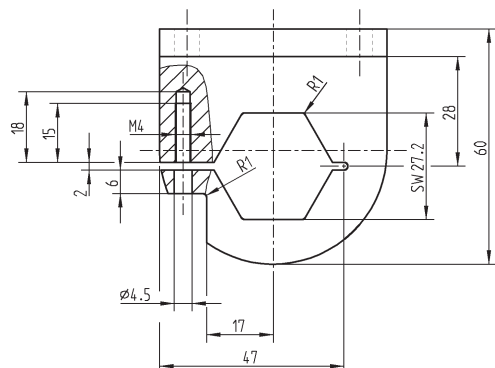
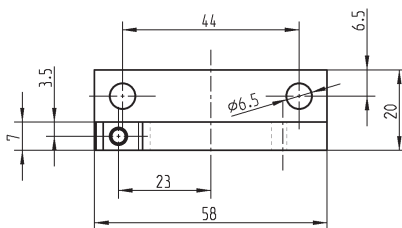


| Part No. | Model name      | Cable length   |
|----------|-----------------|----------------|
| 6036384  | DOL-1205-G05MAC | 5 m, shielded  |
| 6036385  | DOL-1205-G10MAC | 10 m, shielded |
| 6036386  | DOL-1205-G20MAC | 20 m, shielded |



Device fixture

| Part-no. | Model name         | Description            |
|----------|--------------------|------------------------|
| 5322501  | BEF-FL-ALUPBS-HLDR | Device fixture for PBS |



Type Code

Pressure type

|   |          |
|---|----------|
| R | Gauge    |
| A | Absolute |
| C | Compound |

Pressure Unit

|   |                    |
|---|--------------------|
| B | bar                |
| M | MPa                |
| P | psi                |
| K | kg/cm <sup>2</sup> |

Standard measurement ranges see the following page

Process Connector

|    |                                      |
|----|--------------------------------------|
| GE | G 1/2 B according to EN 837          |
| G1 | G 1/4 A according to DIN 3852-E      |
| G2 | G 1/4 female according to EN 837     |
| GH | G 1/4 female, compatible with Ermeto |
| N1 | 1/4" NPT                             |
| R1 | R 1/4 ISO 7 (DIN2999)                |

Pressure Port

|   |                                      |
|---|--------------------------------------|
| S | Standard pressure port               |
| N | 0.3 mm pressure port <sup>1)2)</sup> |
| M | 0.6 mm pressure port <sup>1)</sup>   |

Sealing

|   |                                       |
|---|---------------------------------------|
| N | NBR sealing <sup>1)</sup>             |
| F | FPM/FKM sealing <sup>1)</sup>         |
| C | Copper sealing <sup>3)</sup>          |
| S | Stainless steel sealing <sup>3)</sup> |
| O | without sealing <sup>4)</sup>         |

Output Signal

|   |  |
|---|--|
| A | two switching outputs (PNP)                        |
| B | one switching output (PNP) + 4...20 mA             |
| C | one switching output (PNP) + 0...10 V              |
| D | two switching outputs (PNP) + 4...20 mA            |
| E | two switching outputs (PNP) + 0...10 V             |
| F | two switching outputs (NPN)                        |
| G | one switching output (NPN) + 4...20 mA             |
| H | one switching output (NPN) + 0...10 V              |
| I | two switching outputs (NPN) + 4...20 mA            |
| K | two switching outputs (NPN) + 0...10 V             |
| L | IO-Link, two switching outputs PNP                 |
| N | IO-Link, one switching output PNP (Q1) + 4...20 mA |
| P | IO-Link, one switching output PNP (Q1) + 0...10 V  |
| Q | IO-Link, two switching outputs PNP + 4...20 mA     |
| R | IO-Link, two switching outputs PNP + 0...10 V      |

|       |  |  |  |  |   |  |  |  |   |  |  |  |  |   |   |  |
|-------|--|--|--|--|---|--|--|--|---|--|--|--|--|---|---|--|
| PBS - |  |  |  |  | S |  |  |  | S |  |  |  |  | A | O |  |
|-------|--|--|--|--|---|--|--|--|---|--|--|--|--|---|---|--|

Continuation see the following page

Errors excepted, subject to modifications

<sup>1)</sup> Only with process connection G 1/4 A acc. to DIN 3852E  
<sup>2)</sup> ≥ 10 bar

<sup>3)</sup> Only with process connection G 1/2 B acc. to EN837

<sup>4)</sup> Delivery of process connection G 1/4 acc. to DIN 3852E including sealing

Type Code

**Electrical Connector**

|   |                                     |
|---|-------------------------------------|
| M | M12 x 1, 4-pin, IP 67 <sup>1)</sup> |
| 5 | M12 x 1, 5-pin, IP 67 <sup>2)</sup> |

**Design Specifics**

|   |                          |
|---|--------------------------|
| Z | without design specifics |
| G | free from oil and grease |

|       |  |  |  |   |  |  |   |  |  |  |   |   |  |
|-------|--|--|--|---|--|--|---|--|--|--|---|---|--|
| PBS - |  |  |  | S |  |  | S |  |  |  | A | 0 |  |
|-------|--|--|--|---|--|--|---|--|--|--|---|---|--|

<sup>1)</sup> For variant with one switching and one analog output or 2 switching outputs  
<sup>2)</sup> For variants with 2 switching outputs and one analog output

| Measurement ranges | bar / Gauge Pressure |  | bar / Absolute Pressure |                 | bar / Compound Pressure |     |               |
|--------------------|----------------------|--|-------------------------|-----------------|-------------------------|-----|---------------|
| 1X0                | 0...1 bar            |  | 1X0                     | 0...1 bar abs   |                         | 1X0 | -1...0 bar    |
| 1X6                | 0...1.6 bar          |  | 1X6                     | 0...1.6 bar abs |                         | 2X5 | -1...+1.5 bar |
| 2X5                | 0...2.5 bar          |  | 2X5                     | 0...2.5 bar abs |                         | 4X0 | -1...+3 bar   |
| 4X0                | 0...4 bar            |  | 4X0                     | 0...4 bar abs   |                         | 6X0 | -1...+5 bar   |
| 6X0                | 0...6 bar            |  | 6X0                     | 0...6 bar abs   |                         | 010 | -1...+9 bar   |
| 010                | 0...10 bar           |  | 010                     | 0...10 bar abs  |                         | 016 | -1...+15 bar  |
| 016                | 0...16 bar           |  | 016                     | 0...16 bar abs  |                         | 025 | -1...+24 bar  |
| 025                | 0...25 bar           |  | 025                     | 0...25 bar abs  |                         |     |               |
| 040                | 0...40 bar           |  |                         |                 |                         |     |               |
| 060                | 0...60 bar           |  |                         |                 |                         |     |               |
| 100                | 0...100 bar          |  |                         |                 |                         |     |               |
| 160                | 0...160 bar          |  |                         |                 |                         |     |               |
| 250                | 0...250 bar          |  |                         |                 |                         |     |               |
| 400                | 0...400 bar          |  |                         |                 |                         |     |               |
| 600                | 0...600 bar          |  |                         |                 |                         |     |               |

| Measurement ranges | MPa / Gauge Pressure |  | MPa / Absolute Pressure |                  | MPa / Compound Pressure |     |                  |
|--------------------|----------------------|--|-------------------------|------------------|-------------------------|-----|------------------|
| X10                | 0...0.1 MPa          |  | X10                     | 0...0.1 MPa abs  |                         | X10 | -0.1...+0 MPa    |
| X16                | 0...0.16 MPa         |  | X16                     | 0...0.16 MPa abs |                         | X25 | -0.1...+0.15 MPa |
| X25                | 0...0.25 MPa         |  | X25                     | 0...0.25 MPa abs |                         | X40 | -0.1...+0.3 MPa  |
| X40                | 0...0.4 MPa          |  | X40                     | 0...0.4 MPa abs  |                         | X60 | -0.1...+0.5 MPa  |
| X60                | 0...0.6 MPa          |  | X60                     | 0...0.6 MPa abs  |                         | 1X0 | -0.1...+0.9 MPa  |
| 1X0                | 0...1 MPa            |  | 1X0                     | 0...1 MPa abs    |                         | 1X6 | -0.1...+1.5 MPa  |
| 1X6                | 0...1.6 MPa          |  | 1X6                     | 0...1.6 MPa abs  |                         | 2X5 | -0.1...+2.4 MPa  |
| 2X5                | 0...2.5 MPa          |  | 2X5                     | 0...2.5 MPa abs  |                         |     |                  |
| 4X0                | 0...4 MPa            |  |                         |                  |                         |     |                  |
| 6X0                | 0...6 MPa            |  |                         |                  |                         |     |                  |
| 010                | 0...10 MPa           |  |                         |                  |                         |     |                  |
| 016                | 0...16 MPa           |  |                         |                  |                         |     |                  |
| 025                | 0...25 MPa           |  |                         |                  |                         |     |                  |
| 040                | 0...40 MPa           |  |                         |                  |                         |     |                  |
| 060                | 0...60 MPa           |  |                         |                  |                         |     |                  |

Errors excepted, subject to modifications

Type Code

| Measurement ranges | psi / Gauge Pressure | psi / Absolute Pressure | psi / Compound Pressure |
|--------------------|----------------------|-------------------------|-------------------------|
|                    | 015 0...15 psi       | 015 0...15 psi abs      | 015 -30 InHg...0 psi    |
|                    | 025 0...25 psi       | 025 0...25 psi abs      | 030 -30 InHg...+15 psi  |
|                    | 030 0...30 psi       | 030 0...30 psi abs      | 040 -30 InHg...+25 psi  |
|                    | 050 0...50 psi       | 050 0...50 psi abs      | 045 -30 InHg...+30 psi  |
|                    | 100 0...100 psi      | 100 0...100 psi abs     | 065 -30 InHg...+50 psi  |
|                    | 160 0...160 psi      | 160 0...160 psi abs     | 115 -30 InHg...+100 psi |
|                    | 200 0...200 psi      | 200 0...200 psi abs     | 175 -30 InHg...+160 psi |
|                    | 300 0...300 psi      | 300 0...300 psi abs     | 215 -30 InHg...+200 psi |
|                    | 500 0...500 psi      |                         | 315 -30 InHg...+300 psi |
|                    | 1K0 0...1000 psi     |                         |                         |
|                    | 1K5 0...1500 psi     |                         |                         |
|                    | 2K0 0...2000 psi     |                         |                         |
|                    | 3K0 0...3000 psi     |                         |                         |
|                    | 5K0 0...5000 psi     |                         |                         |
|                    | 8K0 0...8000 psi     |                         |                         |

| Measurement ranges | kg/cm <sup>2</sup> / Gauge Pressure | kg/cm <sup>2</sup> / Absolute Pressure | kg/cm <sup>2</sup> / Compound Pressure |
|--------------------|-------------------------------------|--|--|
|                    | 1X0 0...1 kg/cm <sup>2</sup>        | 1X0 0...1 kg/cm <sup>2</sup> abs       | 1X0 -1...0 kg/cm <sup>2</sup>          |
|                    | 1X6 0...1.6 kg/cm <sup>2</sup>      | 1X6 0...1.6 kg/cm <sup>2</sup> abs     | 2X5 -1...+1.5 kg/cm <sup>2</sup>       |
|                    | 2X5 0...2.5 kg/cm <sup>2</sup>      | 2X5 0...2.5 kg/cm <sup>2</sup> abs     | 4X0 -1...+3 kg/cm <sup>2</sup>         |
|                    | 4X0 0...4 kg/cm <sup>2</sup>        | 4X0 0...4 kg/cm <sup>2</sup> abs       | 6X0 -1...+5 kg/cm <sup>2</sup>         |
|                    | 6X0 0...6 kg/cm <sup>2</sup>        | 6X0 0...6 kg/cm <sup>2</sup> abs       | 010 -1...+9 kg/cm <sup>2</sup>         |
|                    | 010 0...10 kg/cm <sup>2</sup>       | 010 0...10 kg/cm <sup>2</sup> abs      | 016 -1...+15 kg/cm <sup>2</sup>        |
|                    | 016 0...16 kg/cm <sup>2</sup>       | 016 0...16 kg/cm <sup>2</sup> abs      | 025 -1...+24 kg/cm <sup>2</sup>        |
|                    | 025 0...25 kg/cm <sup>2</sup>       | 025 0...25 kg/cm <sup>2</sup> abs      |  |
|                    | 040 0...40 kg/cm <sup>2</sup>       |  |  |
|                    | 060 0...60 kg/cm <sup>2</sup>       |  |  |
|                    | 100 0...100 kg/cm <sup>2</sup>      |  |  |
|                    | 160 0...160 kg/cm <sup>2</sup>      |  |  |
|                    | 250 0...250 kg/cm <sup>2</sup>      |  |  |
|                    | 400 0...400 kg/cm <sup>2</sup>      |  |  |
|                    | 600 0...600 kg/cm <sup>2</sup>      |  |  |

**Australia**

Phone +61 3 9497 4100  
1800 33 48 02 – tollfree  
E-Mail sales@sick.com.au

**Belgium/Luxembourg**

Phone +32 (0)2 466 55 66  
E-Mail info@sick.be

**Brasil**

Phone +55 11 3215-4900  
E-Mail sac@sick.com.br

**Ceská Republika**

Phone +420 2 57 91 18 50  
E-Mail sick@sick.cz

**China**

Phone +852-2763 6966  
E-Mail ghk@sick.com.hk

**Danmark**

Phone +45 45 82 64 00  
E-Mail sick@sick.dk

**Deutschland**

Phone +49 211 5301-301  
E-Mail info@sick.de

**España**

Phone +34 93 480 31 00  
E-Mail info@sick.es

**France**

Phone +33 1 64 62 35 00  
E-Mail info@sick.fr

**Great Britain**

Phone +44 (0)1727 831121  
E-Mail info@sick.co.uk

**India**

Phone +91-22-4033 8333  
E-Mail info@sick-india.com

**Israel**

Phone +972-4-999-0590  
E-Mail info@sick-sensors.com

**Italia**

Phone +39 02 27 43 41  
E-Mail info@sick.it

**Japan**

Phone +81 (0)3 3358 1341  
E-Mail support@sick.jp

**Nederlands**

Phone +31 (0)30 229 25 44  
E-Mail info@sick.nl

**Norge**

Phone +47 67 81 50 00  
E-Mail austefjord@sick.no

**Österreich**

Phone +43 (0)22 36 62 28 8-0  
E-Mail office@sick.at

**Polska**

Phone +48 22 837 40 50  
E-Mail info@sick.pl

**Republic of Korea**

Phone +82-2 786 6321/4  
E-Mail kang@sickkorea.net

**Republika Slovenija**

Phone +386 (0)1-47 69 990  
E-Mail office@sick.si

**România**

Phone +40 356 171 120  
E-Mail office@sick.ro

**Russia**

Phone +7 495 775 05 34  
E-Mail info@sick-automation.ru

**Schweiz**

Phone +41 41 619 29 39  
E-Mail contact@sick.ch

**Singapore**

Phone +65 6744 3732  
E-Mail admin@sicksgp.com.sg

**Suomi**

Phone +358-9-25 15 800  
E-Mail sick@sick.fi

**Sverige**

Phone +46 10 110 10 00  
E-Mail info@sick.se

**Taiwan**

Phone +886 2 2375-6288  
E-Mail sickgrc@ms6.hinet.net

**Türkiye**

Phone +90 216 587 74 00  
E-Mail info@sick.com.tr

**USA/Canada/México**

Phone +1(952) 941-6780  
1 800-325-7425 – tollfree  
E-Mail info@sickusa.com

More representatives and agencies  
in all major industrial nations at  
[www.sick.com](http://www.sick.com)